

RESOLUTION NUMBER L-2008-14**Update to the County Service Area #3
Sphere of Influence****LAFCO Project No. 2007-12-J**

WHEREAS, the Cortese-Knox-Hertzberg Local Government Reorganization Act of 2000 governs the organization and reorganization of cities and special districts by local agency formation commissions established in each county, as defined and specified in Government Code Sections 56000 et seq. (unless otherwise indicated all statutory references are to the Government Code); and

WHEREAS, Section 56425 et seq. provides that the local agency formation commission in each county shall develop and determine the sphere of influence of each local governmental agency within the county, and enact policies designed to promote the logical and orderly development of areas within the spheres of influence, as more fully specified in Sections 56425 et seq.; and

WHEREAS, Section 56430 requires that local agency formation commissions conduct a municipal service review (MSR) prior to, or in conjunction with, consideration of actions to establish or update a sphere of influence (SOI) in accordance with Sections 56076 and 56425; and

WHEREAS, pursuant to Government Code Section 56430, in order to prepare and update spheres of influence, the Commission conducted a Countywide Fire Suppression and Emergency Services Municipal Services Review and adopted a written statement of determinations on August 23, 2006; and

WHEREAS, the agencies reviewed were County Service Area 7, City of South Lake Tahoe, Cameron Park Community Services District, Diamond Springs/El Dorado Fire Protection District, El Dorado County Fire Protection District, El Dorado Hills County Water District, Fallen Leaf Lake Community Services District, Garden Valley Fire Protection District, Georgetown Fire Protection District, Lake Valley Fire Protection District, Latrobe Fire Protection District, Meeks Bay Fire Protection District, Mosquito Fire Protection District, Pioneer Fire Protection District, and Rescue Fire Protection District, among others; and

WHEREAS, pursuant to Section 56430, in order to prepare and update spheres of influence, the Commission conducted a General Government Services I Municipal Services Review and adopted a written statement of determinations on February 27, 2008; and

WHEREAS, the agencies reviewed were Arroyo Vista, Cameron Estates, Cameron Park, Cosumnes River, El Dorado Hills, Fallen Leaf Lake, Greenstone, Holiday Lake, Lakeview, Showcase Ranches and Springfield Meadows Community Services Districts; Georgetown Divide, Kirkwood Meadows, South Tahoe and Tahoe City Public Utility Districts; El Dorado Irrigation District; the Cities of Placerville and South Lake Tahoe; County Service Areas 2, 3, 5 and 9; Georgetown Divide Recreation District; and Tahoe Paradise Resort Improvement District; and

WHEREAS, the Executive Officer reviewed the sphere of influence update pursuant to the California Environmental Quality Act (CEQA), and recommended that the project is exempt from CEQA under Section 15061(b)(3) because it is covered by the general rule that CEQA applies only to projects which have the potential for causing a significant effect on the environment. Where it can be seen with certainty that there is no possibility that the activity in question may have a significant effect on the environment, the activity is not subject to CEQA, and, based thereon, the Executive Officer prepared a Notice of Exemption; and

WHEREAS, the Executive Officer set a public hearing for February 27, 2008 for consideration of the environmental review and the draft sphere of influence update for County Service Area #3 and caused notice thereof to be posted, published and mailed at the times and in the manner required by law at least twenty-one (21) days in advance of the date; and

WHEREAS, on February 27, 2008 the draft sphere of influence update came on regularly for hearing before LAFCO, at the time and place specified in the Notice; and

WHEREAS, at said hearing, LAFCO reviewed and considered the draft sphere of influence, and the Executive Officer's Report and Recommendations; each of the policies, priorities and factors set forth in Government Code Section 56425 et seq.; LAFCO's Policies and Guidelines related to spheres of influence, starting with Policy 4.0; and all other matters presented as prescribed by law; and

WHEREAS, at that time, an opportunity was given to all interested persons, organizations, and agencies to present oral or written testimony and other information concerning the proposal and all related matters; and

WHEREAS, the Commission received, heard, discussed, and considered all oral and written testimony related to the sphere update, including but not limited to protests and objections, the Executive Officer's report and recommendation, the environmental document and determinations and the service reviews; and

WHEREAS, the Commission does hereby make the following determinations regarding the proposal pursuant to Government Code Section 56425(e):

- 1. The present and planned land uses in the area, including agricultural and open space lands.**

Present land use in the area includes residential, recreational, commercial and tourist-related uses. Primary residential areas tend to follow the major highways and roads that bisect the CSA's sphere. Growth and development potential is limited largely by TRPA regulations and there are not expected to be any substantial changes in the planned land use as a direct result of this review.

2. *The present and probable need for public facilities and services in the area.*

Present needs for public facilities and services are currently being met. Probable needs for public facilities and services are not currently anticipated to vary from present needs, as future demands are expected to remain relatively the same. No significant growth or population increases are currently anticipated to affect the CSA's ability to provide of services.

3. *The present capacity of public facilities and adequacy of public services that the agency provides or is authorized to provide.*

The present capacity of public facilities and services provided by CSA 3 is adequate to serve the community. The CSA has sufficient funding to continue a consistent level of service.

4. *The existence of any social or economic communities of interest in the area if the Commission determines that they are relevant to the agency.*

In addition to the City of South Lake Tahoe, CSA 3 serves multiple distinct communities including Fallen Leaf Lake, Meyers, Phillips, Twin Bridges, Strawberry and Kirkwood. The City of South Lake Tahoe is the primary concentrated, social or economic community of interest within the CSA. Due to TRPA land use regulations, these communities' populations are expected to remain relatively stable.

NOW, THEREFORE BE IT HEREBY RESOLVED, DETERMINED, ORDERED AND FOUND:

Section 1. Each of the foregoing recitals is true and correct.

Section 2. The Notice of Exemption prepared by the Executive Officer is approved as the appropriate environmental document for this project.

Section 3. Pursuant to Government Code Section 56425(i)(2), the Fire Suppression and Emergency Services Municipal Services Review and General Government Services I Municipal Services Review found that County Service Area #3 is authorized to provide and currently provides drainage and erosion control, snow removal and equipment, and is an assessment district for emergency medical services.

Section 4. The creation of Sphere of Influence for County Service Area #3 which is coterminous with County Service Area #3's current boundaries is orderly, logical and justifiable.

APPROVED

Section 5. The Executive Officer is directed to file a Notice of Exemption under Section 15061(b)(3) in compliance with the California Environmental Quality Act and local ordinances implementing the same.

Section 6. A Sphere of Influence is hereby established for County Service Area #3, the boundaries of which shall be coterminous with County Service Area #3's current boundaries, as shown on the attached map, marked Exhibit A, attached hereto and incorporated herein by this reference.

PASSED AND ADOPTED by the El Dorado Local Agency Formation Commission at a regular meeting of said Commission, held February 27, 2008 by the following vote of said Commission.

Loftis, Briggs, Hagen, Humphreys, Long
AYES: Norris, Sweeney
NOES: None
ABSTENTIONS: None
ABSENT: None

ATTEST:

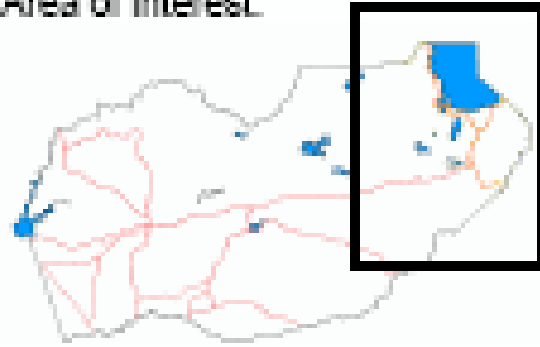
Allison Maroso
Clerk to the Commission

Lanese Loftis
Chairperson

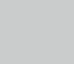


APPROVED

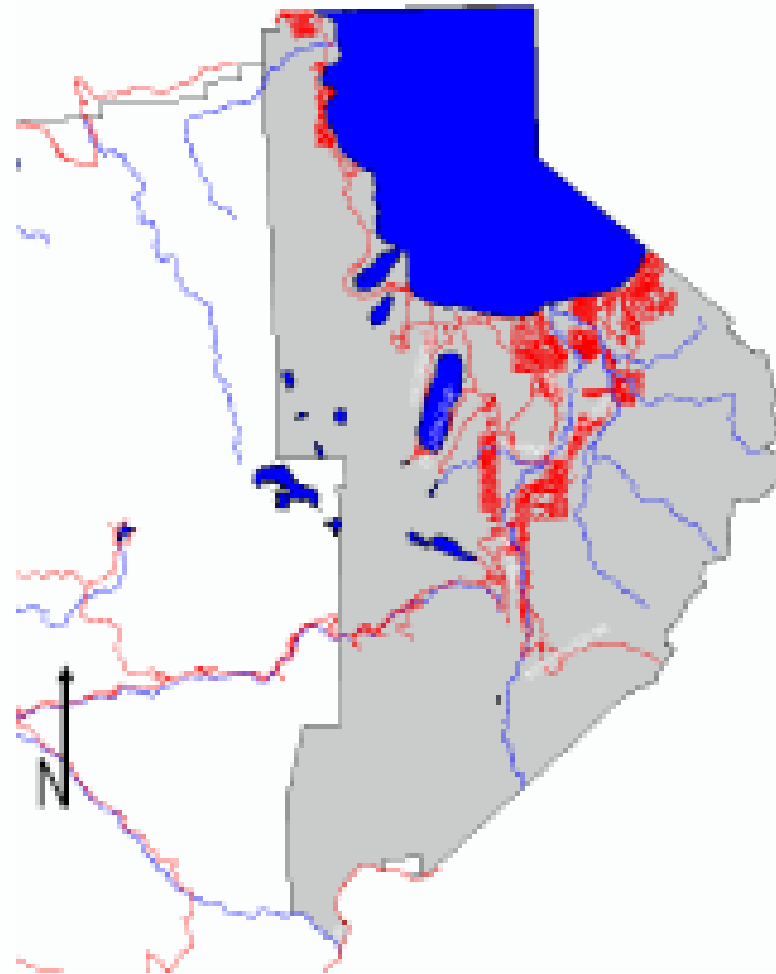
EXHIBIT A

Area of Interest:



Legend:

-  Service Area
-  2008 Sphere of Influence line
-  Roads



County Service Area #3